



SKYRIVER

How to Setup Macros

To create and maintain macros

- **Macros | View/Edit Macros**

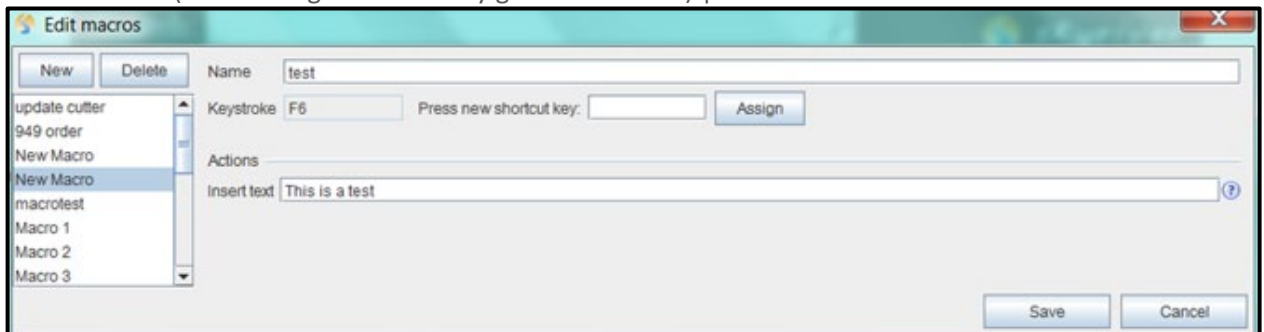
There are no default macros. Once you start creating them, they will display in the Macros menu and you execute them by selecting one from the list. Optionally, you can assign shortcut keys.

NOTE: Use good, descriptive names to make selection easy

- **View/Edit Macros**, select New and choose which type of macro you want to create:
 - Insert Field
 - Insert Text
 - Export with 949
 - Update cutter: if the cutter exists in SkyRiver file, it will copy the cutter from 092
 - Copy field
 - Find and Replace
- Several types of macros can use regular expressions, for example to conditionally find data for a find and replace action.
- For a macro that is used often, assign a shortcut key. Remember to Assign to confirm.
- Macros are stored as an XML file in the SkyRiver directory on your computer. Normal path: C://SkyRiver. The file is named macro-defs.xml, but it doesn't exist until you have started creating macros. The library can create a master file and share, but a file you load will overwrite any existing file – there can only be one. To save off any personal macros before loading a 'master' file, take screen shots. That will make it easy to recreate the macros after the new file is installed.

To Insert Text

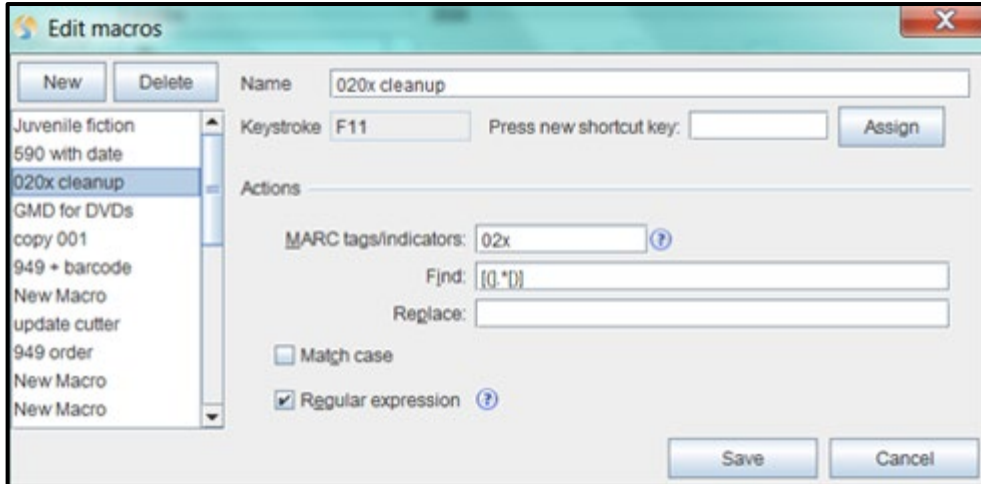
- Click **New | New macro**
- Name the macro, assign a function key
- Insert text (some string that normally goes into a field) | Save



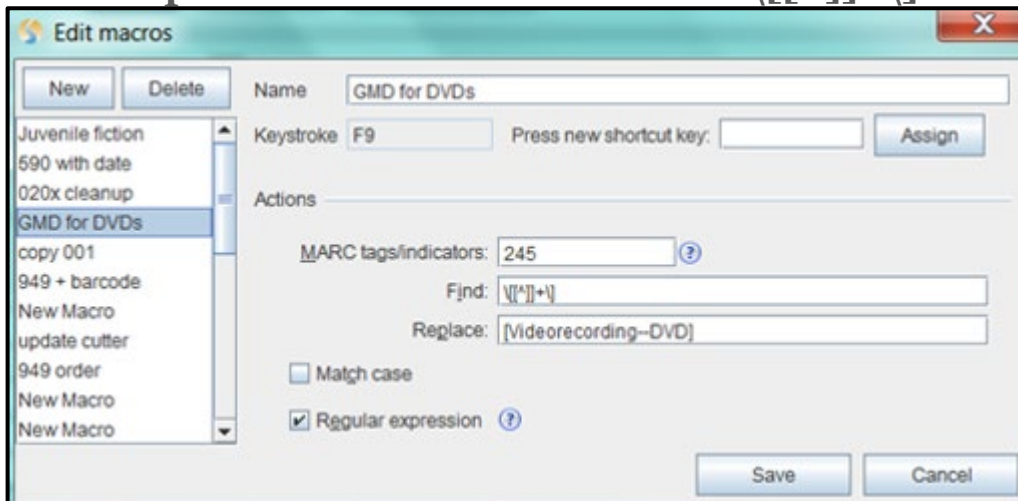
Training

To Find and Replace: `[().*[]]` or `[().*[]]`

This will eliminate any additional information in any of 02x fields



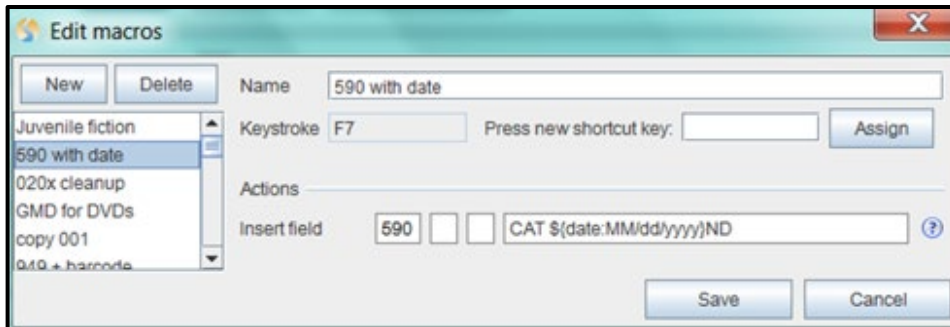
To add specific information to a field: `\[[^]]+\]`



Insert a field:

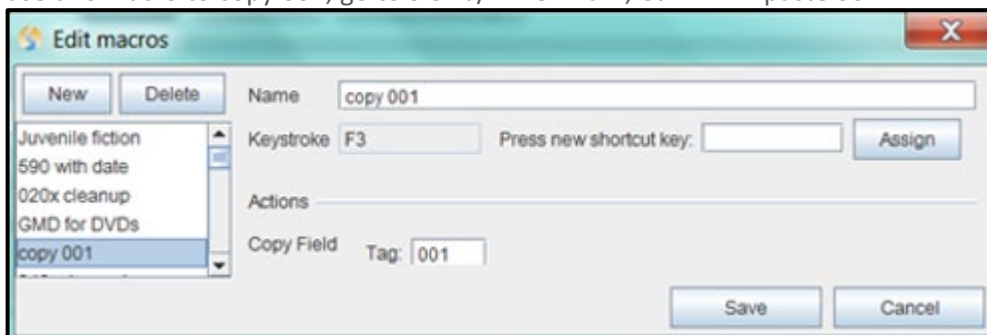
It can be used to add today's date for cat date and initial: CAT \${date MMddyyyy}ND

Training



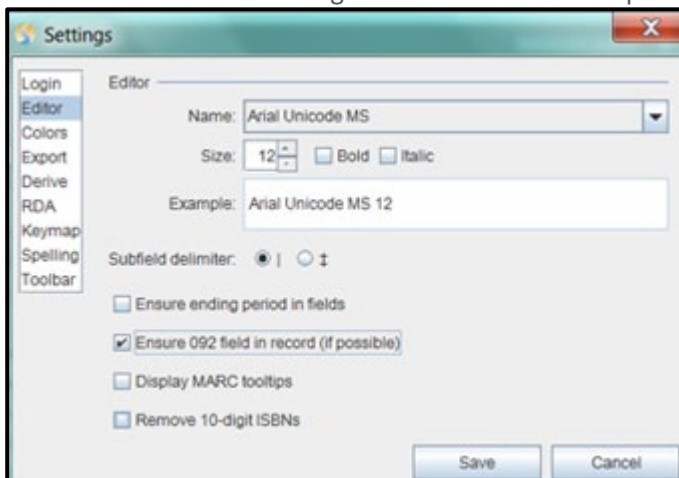
Copy a field

This is very useful to check on the record in Sierra/Millennium, after exporting the record. They can use this macro to copy 001; go to Sierra/Millennium, Ctrl+v will paste 001.



Update Cutter

This is only for Dewey libraries and only works when there is a 092 in the record. The first thing to do is to set the Editor Setting to ensure a 092 where possible.



This will copy a 082 into a 092 if there is one but not the other. It also requires that there be a subfield b in the 092.

Training

If you have:

092__ 396.4798 | b Kline or

092__ 396.4798 | b K

It will become

092__ 396.4798 | b K685 (on application of the macro)

It is simply looking up the Cutter three figure author table based on the data in the 1xx field and providing the information.

This publication is supplied for the exclusive use of customers of Innovative Interfaces with the understanding that it shall not be shown or distributed to anyone outside of the customer's organization without the prior written permission of Innovative Interfaces. This publication may be copied only if the copies are for the exclusive use of staff members of libraries that have purchased the Innovative system.

© 2022, Innovative Interfaces, Inc.