



POLARIS WEB ADMIN

How to Customize Default Quotes in Leap

Introduction:

This article will show you how to customize the default quotes in Leap.



Accessing Web Admin:

The staff user must have the System Administration permission: WebAdmin access: Allow. Use a browser to access Web Admin.

- The URL for Web Admin is typically <http://servername/WebAdmin>
- To log in: Supply your username, domain, and password, then click “Log in”

Polaris Language Editor :: Login


← → ↻ ⚠ Not secure | syr-trainapp/webadmin/Login.aspx ☆ ⓘ

  Polaris Web Admin Tool

User name
(username@domain or domain(username))

Password

Copyright © 2020 Innovative Interfaces, Inc.

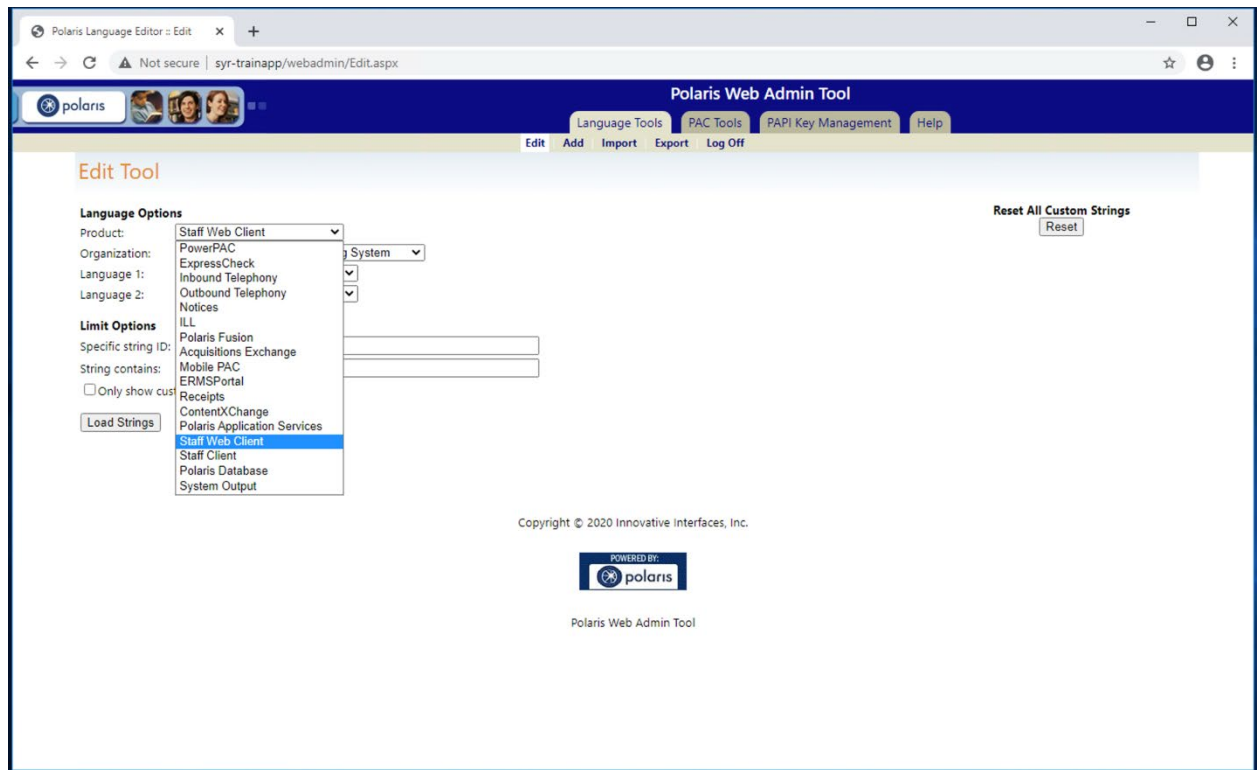
POWERED BY:


Polaris Web Admin Tool

Training

After logging in, Web Admin defaults to the Language Tools tab/edit page:

- Product: **Select Staff Web Client**
- Organization: Select the organization for which the change is being made: System, Library, or Branch level.



Type in the string ID to be changed/customized, and hit Load Strings.

For reference, here are the 12 strings along with the default quotes and authors:

Quote Text	Author Attribution
SW_CI_RANDOM_QUOTE1	SW_CI_RANDOM_AUTH1
SW_CI_RANDOM_QUOTE2	SW_CI_RANDOM_AUTH2
SW_CI_RANDOM_QUOTE3	SW_CI_RANDOM_AUTH3
SW_CI_RANDOM_QUOTE4	SW_CI_RANDOM_AUTH4
SW_CI_RANDOM_QUOTE5	SW_CI_RANDOM_AUTH5
SW_CI_RANDOM_QUOTE6	SW_CI_RANDOM_AUTH6

Training

The screenshot shows the Polaris Web Admin Tool interface. The browser address bar indicates the URL is `syrr-trainapp/webadmin/Edit.aspx`. The page title is "Polaris Language Editor: Edit". The main navigation bar includes "Language Tools", "PAC Tools", "PAPI Key Management", and "Help". The sub-navigation bar includes "Edit", "Add", "Import", "Export", and "Log Off".

The "Edit Tool" section contains the following options:

- Language Options:**
 - Product: Staff Web Client
 - Organization: System: Polaris Library Training System
 - Language 1: English - United States
 - Language 2: English - United States
- Limit Options:**
 - Specific string ID: SW_CI_RANDOM_QUOTE6
 - String contains:
 - ☐ Only show customized strings

Buttons include "Reset All Custom Strings" (with a "Reset" sub-button) and "Load Strings".

The table below shows the current string being edited:

Page 1 of 1	
English - United States	
	SW_CI_RANDOM_QUOTE6
Default:	A book is a dream you can hold in your hand.

At the bottom of the page, there is a copyright notice: "Copyright © 2020 Innovative Interfaces, Inc." and a logo for "POWERED BY: polaris". The page is titled "Polaris Web Admin Tool".

Click on the icon to the right of the language string, and type in the custom quote. Click the icon with the check on the left of the screen to save. The custom quote text will be in purple.

Training

Edit Tool

Language Options

Product:

Organization:

Language 1:

Language 2:

Limit Options

Specific string ID:

String contains:

☐ Only show customized strings

Page 1 of 1

English - United States
SW_CI_RANDOM_QUOTE6

Default: A book is a dream you can hold in your hand.

Copyright © 2020 Innovative Interfaces, Inc.

POWERED BY:

Polaris Web Admin Tool

Page 1 of 1

English - United States
SW_CI_RANDOM_QUOTE6

Custom: Michelle is Awesome!

Page 1 of 1

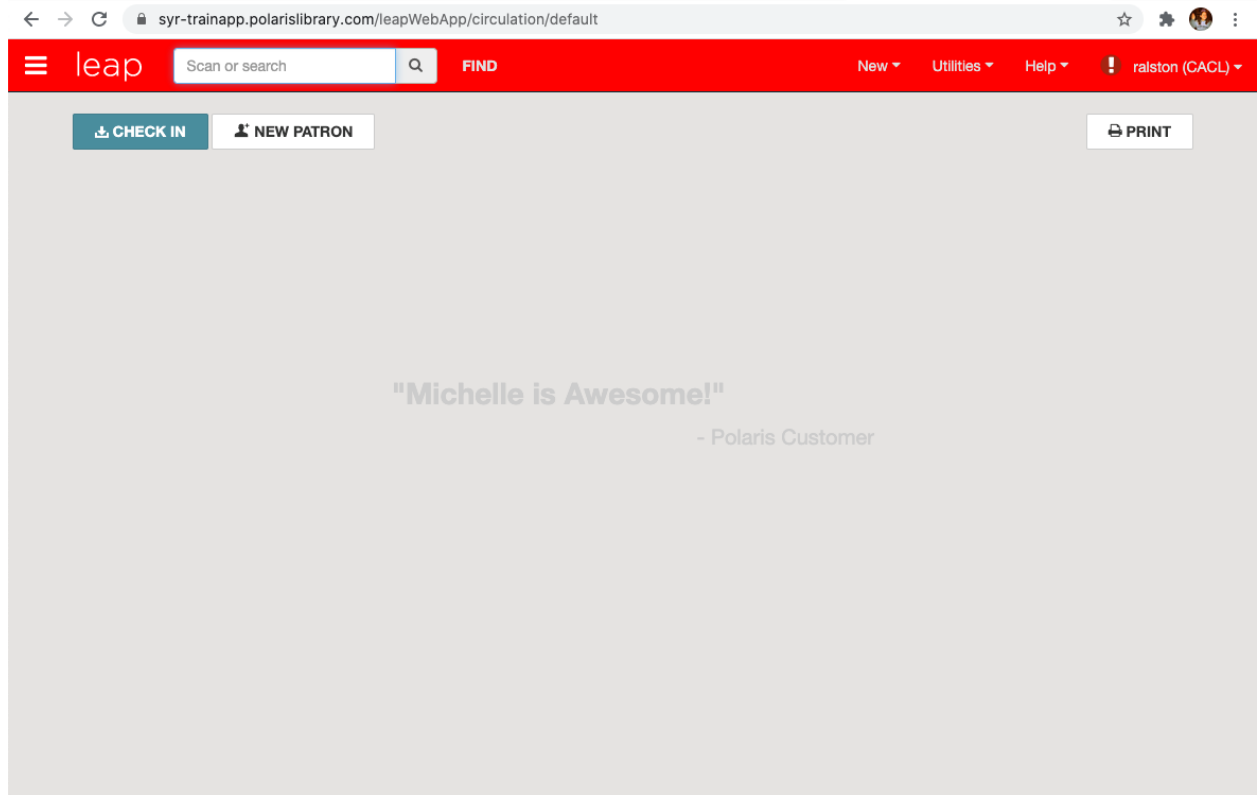
English - United States
SW_CI_RANDOM_QUOTE6

Custom: Michelle is Awesome!

Repeat the same steps for the author string of the matching quote, and/or any other quote/author combinations you'd like to customize.

Sign into Leap and enjoy your custom quotes:

Training



This publication is supplied for the exclusive use of customers of Innovative Interfaces with the understanding that it shall not be shown or distributed to anyone outside of the customer's organization without the prior written permission of Innovative Interfaces. This publication may be copied only if the copies are for the exclusive use of staff members of libraries that have purchased the Innovative system.

© 2022, Innovative Interfaces, Inc.